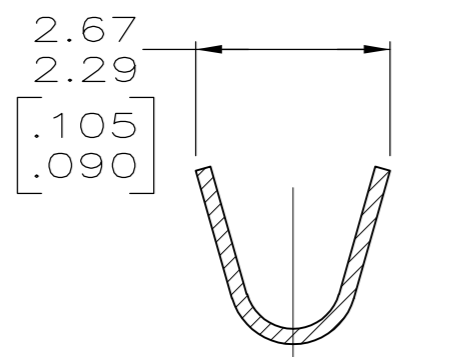
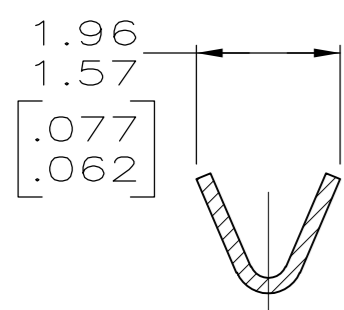
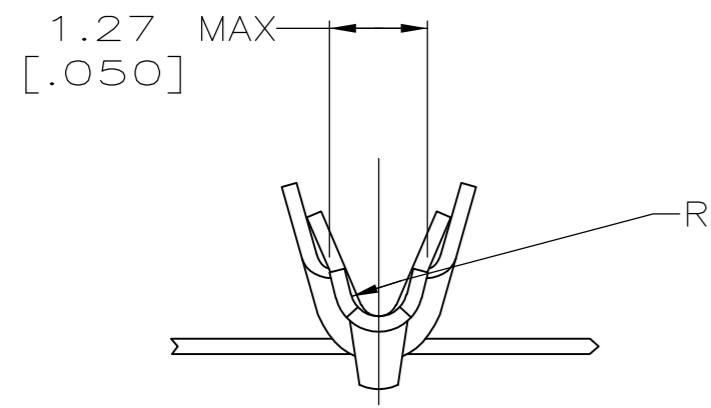
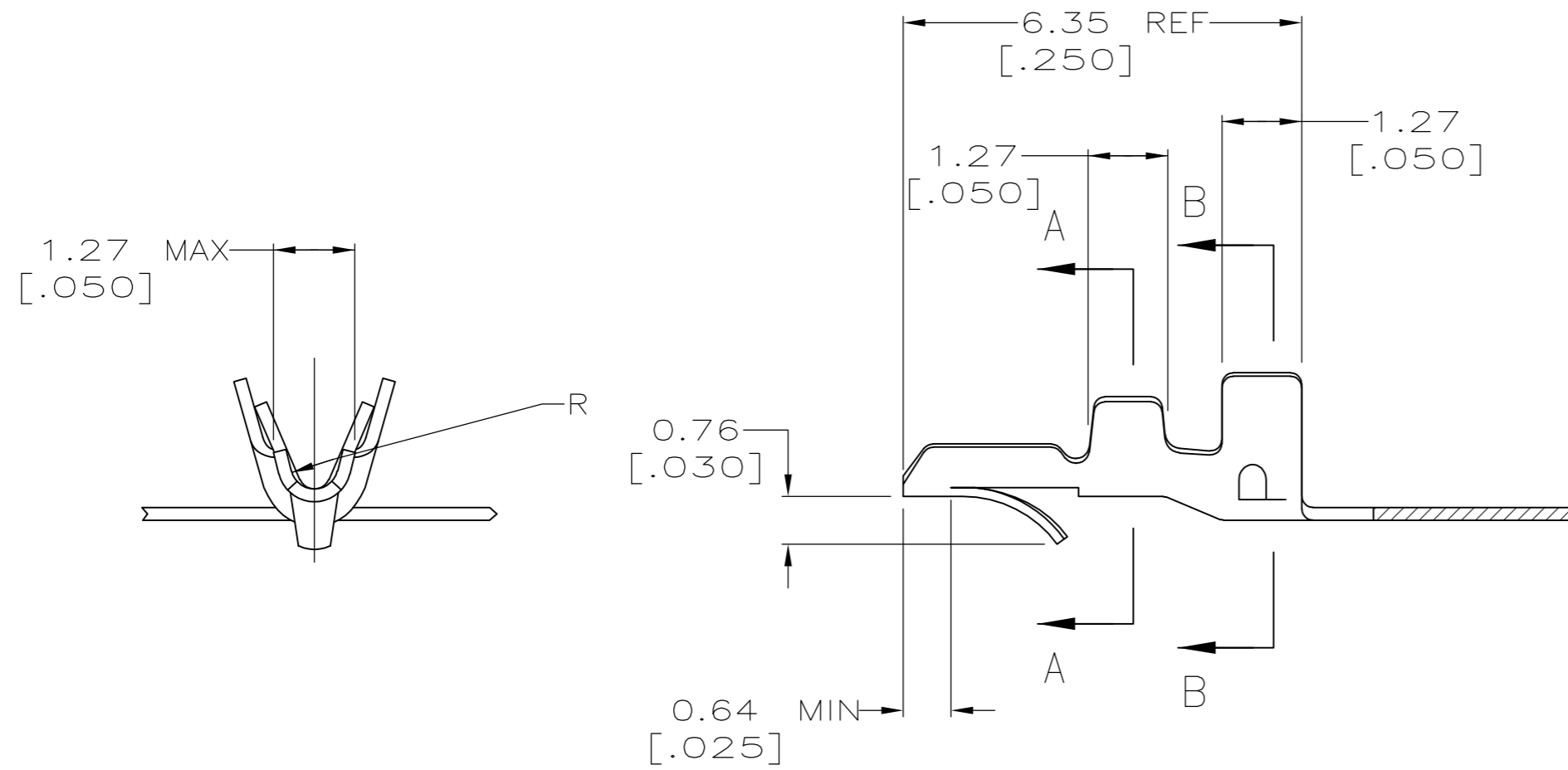
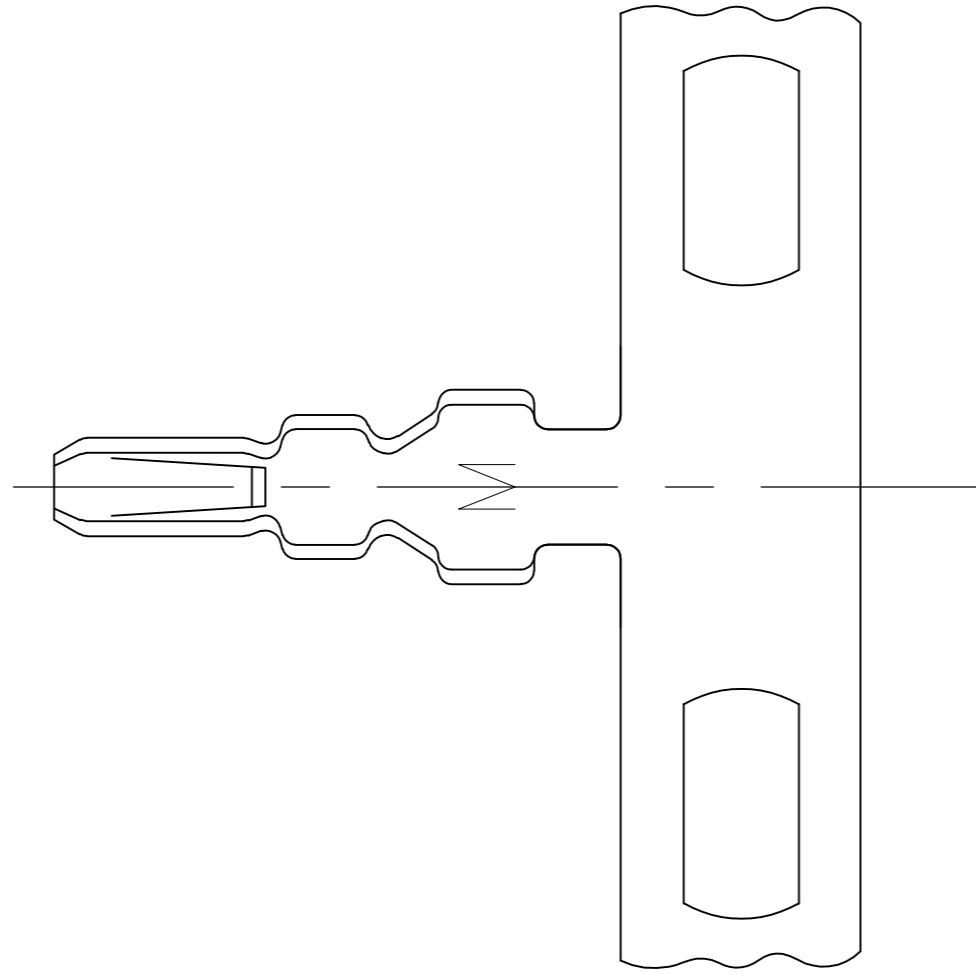
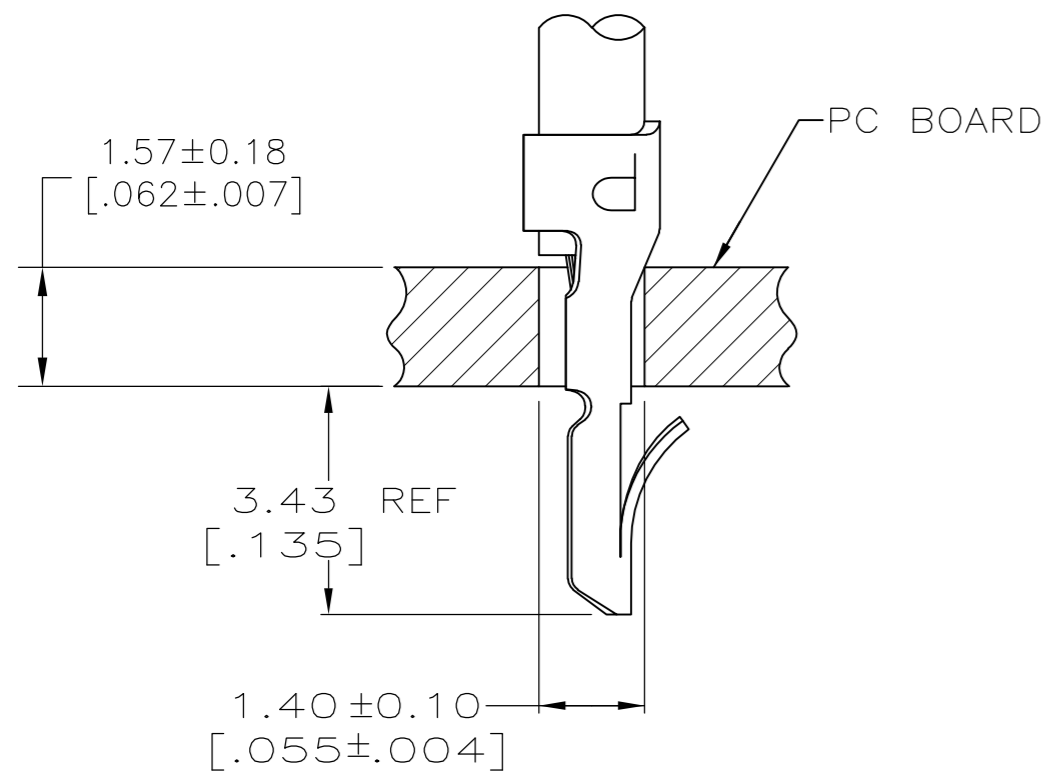


THIS DRAWING IS UNPUBLISHED. RELEASED FOR PUBLICATION
 © COPYRIGHT - By - ALL RIGHTS RESERVED.

LOC	DIST	REVISIONS					
CM	00	P	LTR	DESCRIPTION	DATE	DWN	APVD
		J1		REVISED PER ECO-11-004917	11MAR11	RK	HMR

- PARTS COMPLY WITH AMP SOLDERABILITY SPEC 109-11-3.
- PARTS CAPABLE OF BEING APPLIED BY AMPOMATER.
- 0.00508 [.000200] MIN BRIGHT TIN-LEAD.
- WIRE RANGE: 0.12 - 0.4 mm² (26 - 22 AWG).
- INSULATION RANGE: 1.02 - 1.78 [.040 - .070] DIA.
- DIMENSIONS IN BRACKETS ARE IN INCHES.
- 0.00508 [.000200] MIN BRIGHT TIN.



METRIC

7	0.20[.008] PH BRZ	3-640663-1
3	0.20[.008] PH BRZ	640663-1
FINISH	MATERIAL	PART NO

DIMENSIONS:		TOLERANCES UNLESS OTHERWISE SPECIFIED:		DWN		S. CARPENTER		21AUG2003	
INCHES		0 PLC ±		CHK		J. ELLIS		21AUG2003	
SEE TABLE		1 PLC ±		APVD		J. ELLIS		21AUG2003	
SEE TABLE		2 PLC ±		PRODUCT SPEC		NAME		TE Connectivity	
SEE TABLE		3 PLC ± 0.13 [.005]		APPLICATION SPEC		114-1016		SIZE CAGE CODE DRAWING NO	
SEE TABLE		4 PLC ±		WEIGHT		A2 00779 C=640663		RESTRICTED TO	
SEE TABLE		ANGLES ±		CUSTOMER DRAWING		SCALE 10:1		SHEET 1 of 1	
SEE TABLE		FINISH		REV		J1			

640663

A

A/C BUSINESS GROUP 3323 177-34 RALPH VESTAL